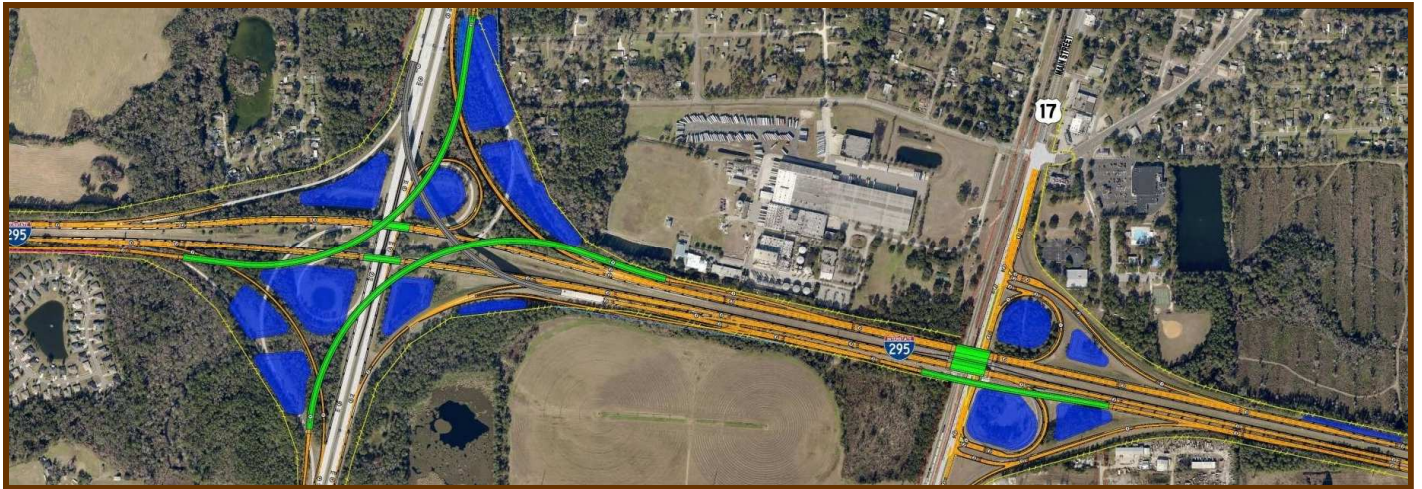




Geotechnical • CMT • CEI

Florida Department of Transportation I-95/I-295 NORTH INTERCHANGE



CSI Geo provided geotechnical engineering services for improvements to the I-95/I-295 North Interchange. The project consists of replacing the existing interchange with a fully directional, multi-level interchange with high and low level flyover ramps and bridges. The improvements include roadway widening along SR 9A, bridge widening along SR 9A and Cole Road, high-fill embankments, Mechanically Stabilized Earth (MSE) walls, drainage and ponds, box culverts, overhead signs, and high mast lighting.

CSI Geo conducted an extensive subsurface investigation for these improvements, performing geotechnical analyses and providing recommendations for design and construction. The purpose of the field investigation was to gather information in order to:

- Provide roadway and pond soil descriptions and recommendations for removal of unsuitable material and high groundwater conditions.
- Analyze deep foundations, including driven precast concrete piles and drilled shafts, for the various high and low level bridges and flyovers.
- Evaluate areas of high fill embankment for settlement (i.e. consolidation of weak or soft soils, estimated settlement time/amount) and stability.
- Analyze MSE wall external/global stability.
- Provide design parameters for miscellaneous structures (i.e. culverts, signs, and lighting).
- Evaluate the site for soil improvement and stabilization alternatives due to the soft, compressible soils encountered.

Client

FDOT District 2

Location

Duval County, FL

URS Group, Inc.

John Saunders
(813) 877-6384

Project Engineers

- Bruce Khosrozadeh, PE
- Jason Valeria, PE

Services

- Geotechnical Engineering

CSI Geo, Inc.

(904) 641-1993

Jacksonville • Riviera Beach • Atlanta • Savannah

www.csi-geo.com